

SASH MAT:

Your guide to a successful home infusion

Use the letters “SASH” to help remember the order for flushing your catheter

S Saline Flush

Medication Label

Inspect your medication label for the following:

- Name of patient
- Name of medication
- “Use by date”
- Time needed to warm medication to room temperature

Saline (white-top)



A Administration of Medication*

Mini-Bag Plus

Medication

IV Push

Elastomeric



S Saline Flush

Saline (white-top)



H Heparin Flush*

* If Ordered

Heparin (blue OR yellow top)



CLAMP (if present)



* Administration of medication

Please refer to the patient teaching guide for specific directions



Scan the QR code to access all of our Patient Teaching Guides

Reminders

- Use a new alcohol pad with each step.
- **DO NOT** reuse any syringe. Throw away after use.
- **DO NOT** touch the tip of the uncapped syringe with your fingers or let it touch any surfaces. If this happens, throw away the syringe and use a new one.

NOTE: All medication should be free of cracks, leaks, floating particles or discoloration. Call your nurse or pharmacist if there are problems with your medication or anything on label is incorrect

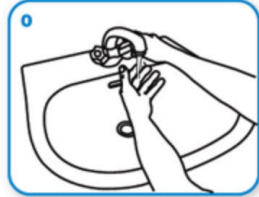
HAND WASHING:

Your guide to proper hand cleaning

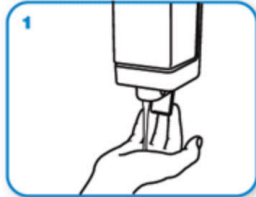
Follow the instructions below to help prevent infection

It is important to wash your hands before and after you work with your catheter, medication and supplies, to help prevent infection. For best results, use a liquid soap rather than a bar soap, and follow these instructions:

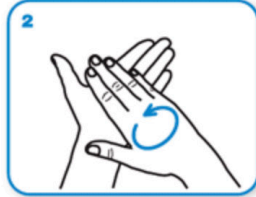
1. Turn on the sink faucet and wet your hands & wrists under warm running water. Leave the faucet on.



Wet hands with water

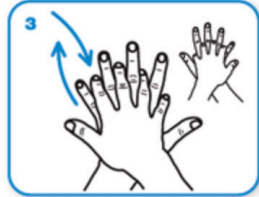


Apply enough soap to cover all hand surfaces

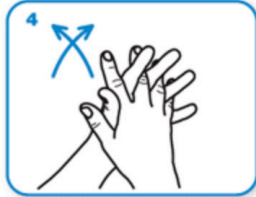


Rub hands palm-to-palm

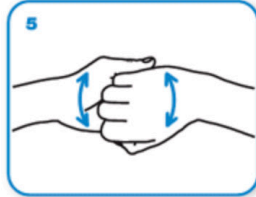
2. Apply enough liquid soap to cover all hand surfaces. Rub hands together, palm to palm, covering all surfaces of both hands, all fingers and your thumbs. Use a nail brush if needed. Scrub thoroughly for **AT LEAST 20 SECONDS**, or as long as singing “Happy Birthday “ twice.



Right palm over left with interlaced fingers and vice versa



Palm to palm with fingers interlaced



Backs of fingers to opposing palms with fingers interlocked

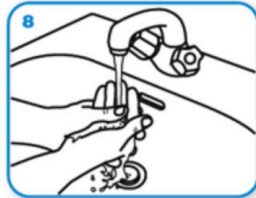
3. Rinse your hands to remove all soap and dry them thoroughly. Dry them with a paper towel or clean (unused) hand towel.



Rotational rubbing of left thumb clasped in right palm and vice versa



Rotational rubbing, backwards and forwards with clasped fingers of right hand in left palm & vice versa

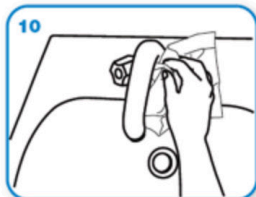


Rinse hands with water

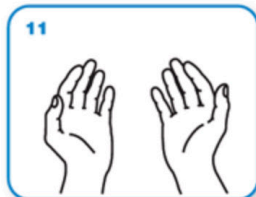
4. After drying your hands, use the same towel to turn off the faucet. **DO NOT** touch the faucet directly with your clean hands.



Dry thoroughly with a single-use towel



Use towel to turn off faucet



...and your hands are safe

5. Once your hands are clean, make sure they do not come in contact with unclean surfaces. If you cough, sneeze or pick up something from the floor, you will need to rewash your hands before continuing.

Use an **alcohol-based hand sanitizer** if you don't have immediate access to soap and water.

NOTES:

Putting the **“CARE”**
 back in healthcare